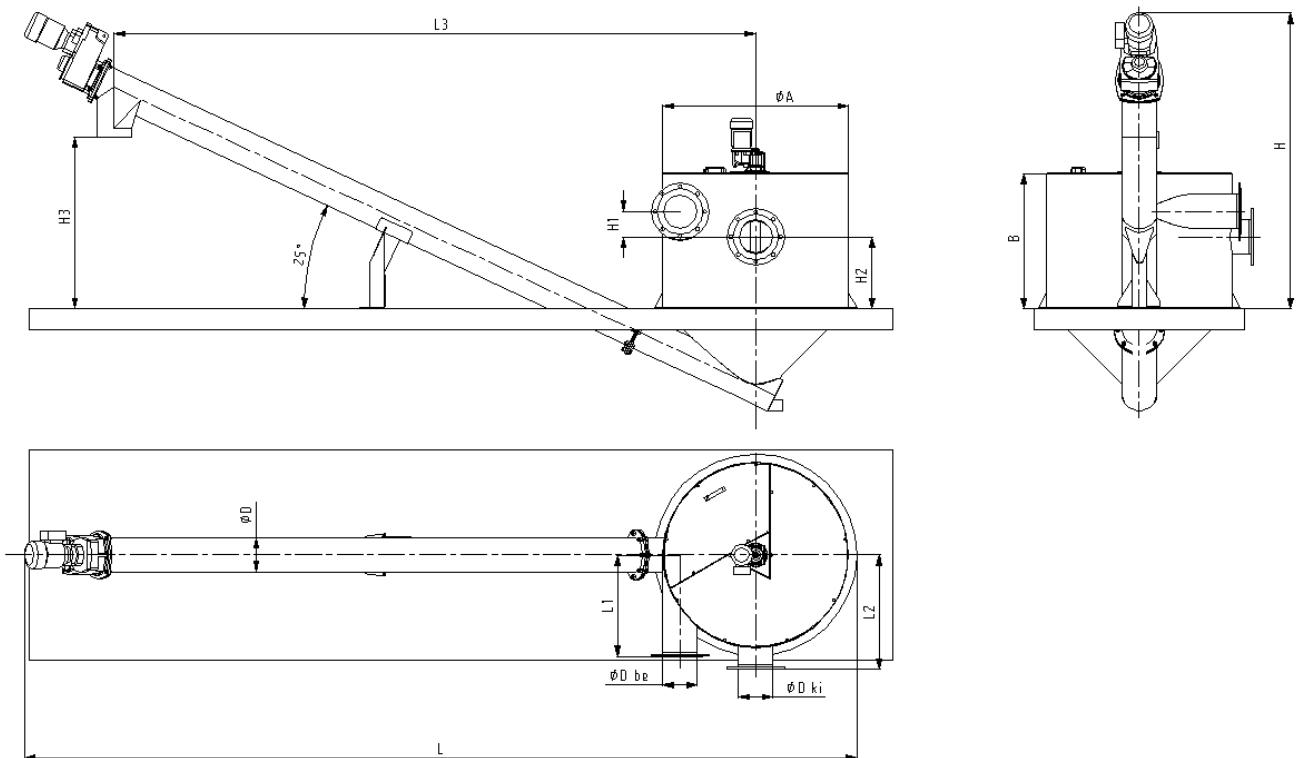


Sand-catcher with tangent screw (HCS_._A)

Type	HCS-100A	HCS-75A	HCS-55A	HCS-40A	HCS-30A	HCS-20A	HCS-15A	HCS-10A
Power (m ³ /h)/(l/s)	360/100	270/75	198/55	144/40	108/30	72/20	54/15	36/10
Efficiency (L) {mm}	5500	5300	5100	4950	4950	4900	4850	4600
Height (H) {mm}	1800	1800	1800	1750	1750	1750	1750	1650
Reservoir diameter (ØA) {mm}	1900	1700	1500	1350	1300	1200	1100	950
Reservoir height (B) {mm}	850	850	800	800	800	800	800	750
Sand slurry pipe length (L1) {mm}	1000	925	750	650	650	600	600	600
Sandless water pipe length (L2) {mm}	1000	925	800	700	700	650	650	550
Centre- to- centre distance (L3) {mm}	3900	3900	3800	3800	3800	3800	3800	3700
Sand slurry pipe height (H1) {mm}	150	50	150	175	150	150	150	150
Sandless water pipe height (H2) {mm}	825	825	600	550	525	450	425	375
Transfer hopper height (H3) {mm}	1100	1050	1025	1000	1000	1000	1000	950
Sand slurry pipe (dp) {mm}	DN400	DN350	DN300	DN250	DN200	DN200	DN200	DN150
Sandless water pipe (dv) {mm}	DN400	DN350	DN300	DN250	DN250	DN200	DN200	DN200
Worm diameter (dcs) {mm}	DN200	DN200	DN200	DN200	DN200	DN200	DN200	DN200
Leechate diversion (de) {mm}	2"	2"	2"	2"	2"	2"	2"	2"
Worm electrical efficiency (kW)	0,55	0,55	0,55	0,55	0,55	0,55	0,55	0,55
Blender electrical efficiency (kW)	0,25	0,18	0,18	0,12	0,12	0,12	0,12	0,12



Wormed sand catcher provide depositing and removing of conducted sewage sand content .