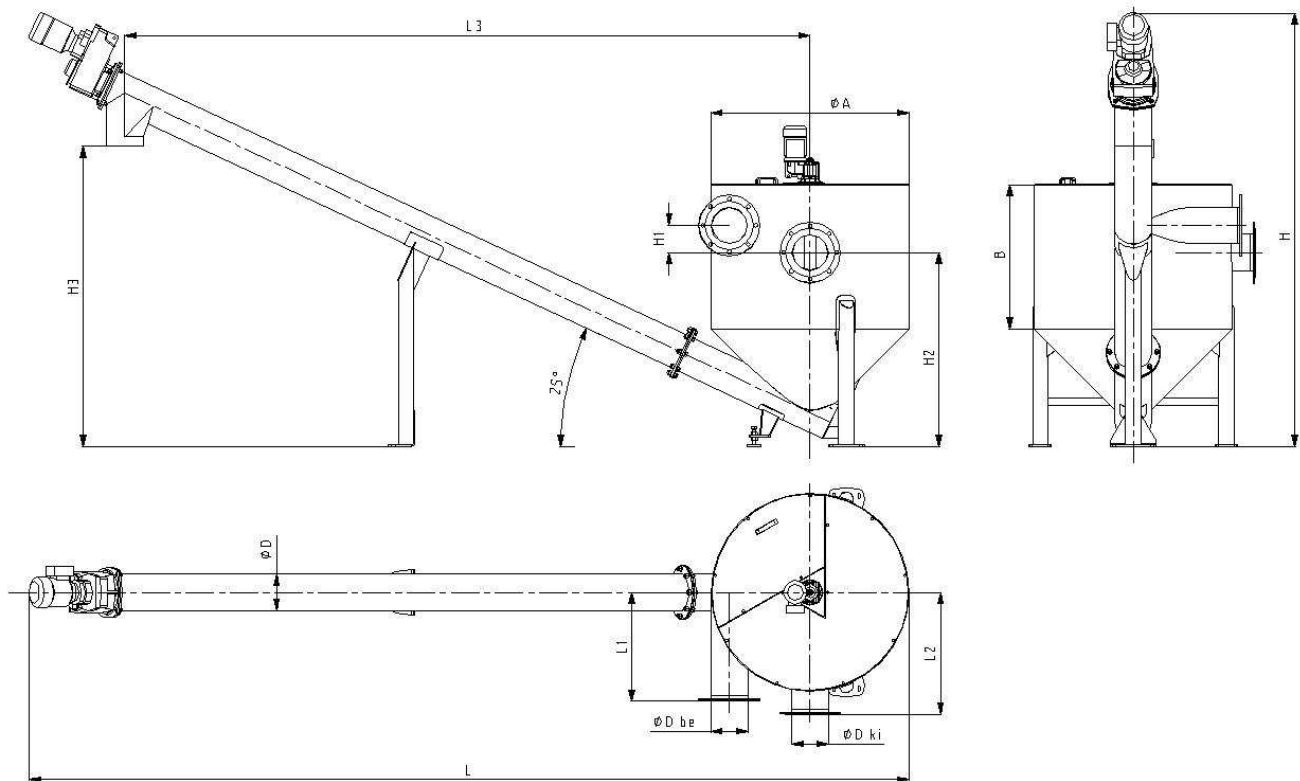


Sand-catcher with tangent screw (HCS_._B)

Type	HCS-100B	HCS-75B	HCS-55B	HCS-40B	HCS-30B	HCS-20B	HCS-15B	HCS-10B
Power (m ³ /h)/(l/s)	360/100	270/75	198/55	144/40	108/30	72/20	54/15	36/10
Efficiency (L) {mm}	5500	5300	5100	4950	4950	4900	4850	4600
Height (H) {mm}	2450	2450	2450	2400	2400	2400	2400	2300
Reservoir diameter (ØA) {mm}	1900	1700	1500	1350	1300	1200	1100	950
Reservoir height (B) {mm}	850	850	800	800	800	800	800	750
Sand slurry pipe length (L1) {mm}	1000	925	750	650	650	600	600	600
Sandless water pipe length (L2) {mm}	1000	925	800	700	700	650	650	550
Centre- to- centre distance (L3) {mm}	3900	3900	3800	3800	3800	3800	3800	3700
Sand slurry pipe height (H1) {mm}	150	50	150	175	150	150	150	150
Sandless water pipe height (H2) {mm}	1475	1475	1250	1200	1175	1100	1075	1025
Transfer hopper height (H3) {mm}	1750	1700	1675	1650	1650	1650	1650	1600
Sand slurry pipe (dp) {mm}	DN400	DN350	DN300	DN250	DN200	DN200	DN200	DN150
Sandless water pipe (dv) {mm}	DN400	DN350	DN300	DN250	DN250	DN200	DN200	DN200
Worm diameter (dcs) {mm}	DN250	DN250	DN200	DN200	DN200	DN200	DN200	DN200
Leechate diversion (de) {mm}	2"	2"	2"	2"	2"	2"	2"	2"
Worm electrical efficiency (kW)	0,55	0,55	0,55	0,55	0,55	0,55	0,55	0,55
Blender electrical efficiency (kW)	0,25	0,18	0,18	0,12	0,12	0,12	0,12	0,12



Wormed sand catcher provide depositing and removing of conducted sewage sand content.